

SPECIAL SATS BREAKFAST

MONDAY 12TH MAY - THURSDAY 15TH MAY

MENU:

MONDAY - BAGELS WITH A VARIETY OF FILLINGS

TUESDAY - SAUSAGE SANDWICHES

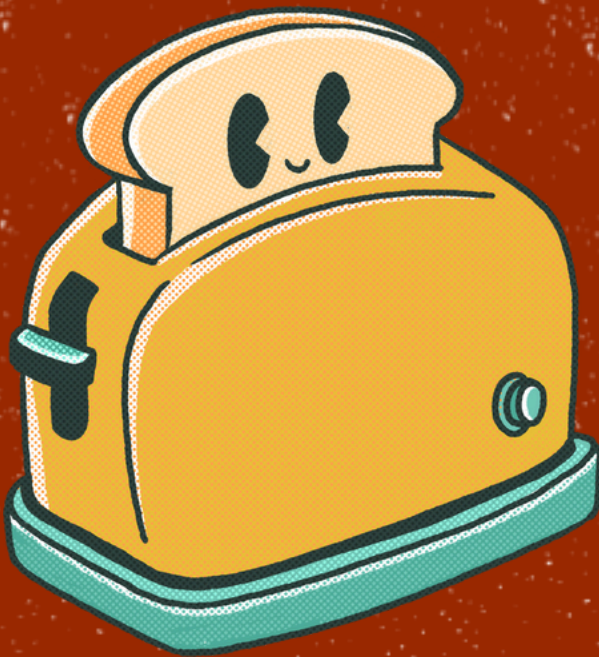
WEDNESDAY - BACON SANDWICHES

THURSDAY - WAFFLES WITH A VARIETY OF TOPPINGS



**COME TO SCHOOL DURING SATS
WEEK FOR 8:20AM TO SHARE A
DELICIOUS BREAKFAST WITH
YOUR FRIENDS!**

**EVEN IF YOU DON'T FANCY
EATING, WE ADVISE COMING TO
OUR SPECIAL BREAKFAST TO
HELP CALM YOUR NERVES WITH
YOUR TEACHERS AND FRIENDS.**



**ALL DIETARY REQUIREMENTS WILL BE
CATERED FOR.**

**SEE YOU
THERE!**

